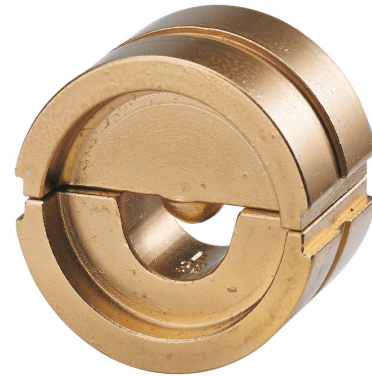


CRIMPING INSERT SERIES 22, MANDREL CRIMPING FOR CRIMP/PIN AND TUBULAR CABLE LUG, 16 MM²**Article number: 105761**

Crimping insert Series 22, for crimp terminals DIN 46234 and pin terminals DIN 46230 and tubular cable lugs for fine-stranded conductors, mandrel crimping, 16 mm², 1 pair



Attribute	Value
Application	Presskabelschuhe und Verbinder
Press mold	Dornpressung
Cross section	16 - 16

GTIN: 4021103057612

CIMCO Werkzeuge GmbH & Co. KG
Hohenagener Straße 1 – 5
42855 Remscheid
Telefon +49 2191 3718-01
info@cimco.de • cimco.de