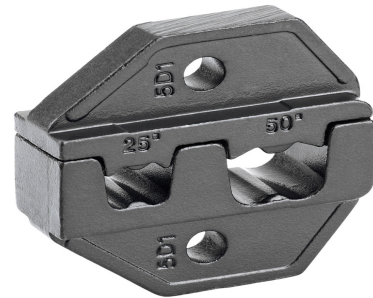


COMPRESSION PROFILE INSERT LOOSE, INSULATED AND NON-INSULATED WIRE END FERRULES DIN: 25 AND 50 MM²

Article number: 102007

Crimping profile insert, loose, trapezoidal crimping, 1 pair for 106142, insulated and non-insulated ferrules DIN: 25 and 50 mm², optimized crimping shape; particularly suitable for thin-
ned, fine-stranded conductors to IEC 228

Length (mm)	75 mm
Width (mm)	55 mm
Height (mm)	12 mm
Weight (kg)	0,05 kg



Attribute	Value
Application	Aderendhülsen
Press mold	Trapezpressung
Cross section	25 mm ² - 50 mm ²

GTIN: 4021103020074

CIMCO Werkzeuge GmbH & Co. KG
 Hohenagener Straße 1 – 5
 42855 Remscheid
 Telefon +49 2191 3718-01
 info@cimco.de • cimco.de