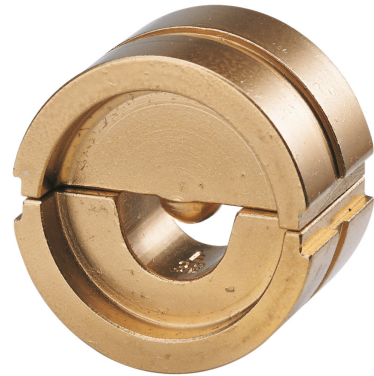


**CRIMPING INSERT SERIES 22, MANDREL CRIMPING FOR CRIMP/PIN AND TUBULAR CABLE LUG, 10 MM<sup>2</sup>****Article number: 105760**

Crimping insert Series 22, for crimping lug DIN 46234 and pin cable lug DIN 46230 and tubular cable lugs for fine-stranded conductors, mandrel crimping, 10 mm<sup>2</sup>, 1 pair

Length (mm) 140 mm  
Width (mm) 80 mm  
Height (mm) 22 mm  
Weight (kg) 0,144 kg



Attribute	Value
Application	Presskabelschuhe und Verbinder
Press mold	Dornpressung
Cross section	10 mm <sup>2</sup> - 10 mm <sup>2</sup>

GTIN: 4021103057605

CIMCO Werkzeuge GmbH & Co. KG  
Hohenagener Straße 1 – 5  
42855 Remscheid  
Telefon +49 2191 3718-01  
info@cimco.de • cimco.de