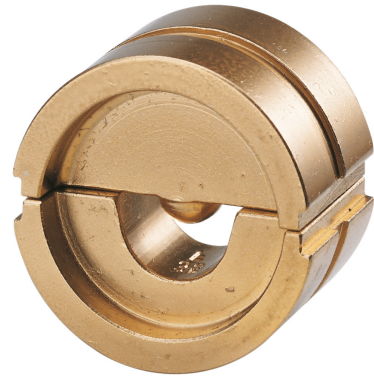


CRIMPING INSERT SERIES 22, MANDREL CRIMPING FOR CRIMP/PIN AND TUBULAR CABLE LUG, 16 MM²**Article number: 105761**

Crimping insert Series 22, for crimp terminals DIN 46234 and pin terminals DIN 46230 and tubular cable lugs for fine-stranded conductors, mandrel crimping, 16 mm², 1 pair

Length (mm) 140 mm
Width (mm) 80 mm
Height (mm) 22 mm
Weight (kg) 0,143 kg



Attribute	Value
Application	Presskabelschuhe und Verbinder
Press mold	Dornpressung
Cross section	16 mm ² - 16 mm ²

GTIN: 4021103057612

CIMCO Werkzeuge GmbH & Co. KG
Hohenagener Straße 1 – 5
42855 Remscheid
Telefon +49 2191 3718-01
info@cimco.de • cimco.de