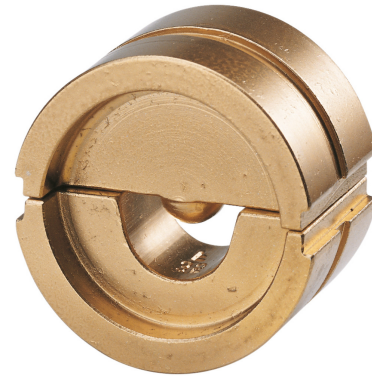


CRIMPING INSERT SERIES 22, MANDREL CRIMPING FOR CRIMP/PIN AND TUBULAR CABLE LUG, 25 MM²**Article number: 105762**

Crimping insert Series 22, for crimping lug DIN 46234 and pin cable lug DIN 46230 and tubular cable lugs for fine-stranded conductors, mandrel crimping, 25 mm², 1 pair

Length (mm) 140 mm
Width (mm) 80 mm
Height (mm) 22 mm
Weight (kg) 0,148 kg



| Attribute | Value |
|---------------|---|
| Application | Presskabelschuhe und Verbinder |
| Press mold | Dornpressung |
| Cross section | 25 mm ² - 25 mm ² |

GTIN: 4021103057629

CIMCO Werkzeuge GmbH & Co. KG
Hohenhagener Straße 1 – 5
42855 Remscheid
Telefon +49 2191 3718-01
info@cimco.de • cimco.de