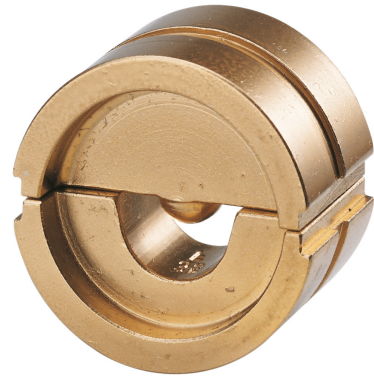


**CRIMPING INSERT SERIES 13, FOR CRIMP CABLE LUG DIN 46234 AND PIN CABLE LUG DIN 46230, 16 MM<sup>2</sup>****Article number: 105942**

Crimping insert series 13, for crimp terminals DIN 46234 and pin terminals DIN 46230, 16 mm<sup>2</sup>, 1 pair

Length (mm) 140 mm  
Width (mm) 90 mm  
Height (mm) 35 mm  
Weight (kg) 0,143 kg



Attribute	Value
Application	sonstige
Press mold	sonstige
Cross section	16 mm <sup>2</sup> - 16 mm <sup>2</sup>

GTIN: 4021103059425

CIMCO Werkzeuge GmbH & Co. KG  
Hohenagener Straße 1 – 5  
42855 Remscheid  
Telefon +49 2191 3718-01  
info@cimco.de • cimco.de