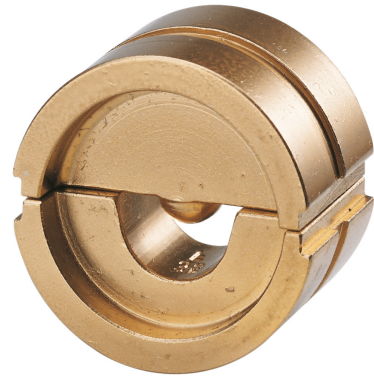


CRIMPING INSERT SERIES 13, FOR CRIMP CABLE LUG DIN 46234 AND PIN CABLE LUG DIN 46230, 95 MM²**Article number: 105952**

Crimping insert series 13, for crimp cable lugs DIN 46234 and pin cable lugs DIN 46230, 95 mm², 1 pair

Length (mm) 140 mm
Width (mm) 90 mm
Height (mm) 35 mm
Weight (kg) 0,155 kg



Attribute	Value
Application	sonstige
Press mold	sonstige
Cross section	95 mm ² - 95 mm ²

GTIN: 4021103059524

CIMCO Werkzeuge GmbH & Co. KG
Hohenagener Straße 1 – 5
42855 Remscheid
Telefon +49 2191 3718-01
info@cimco.de • cimco.de