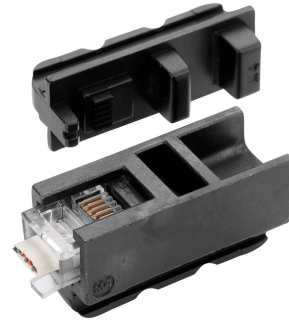


**REPLACEMENT PROFILE FOR CLICK 'N' CRIMP, FOR UNSHIELDED 6-PIN MODULAR PLUGS****Article number: 106016**

---

Click'n'Crimp crimping profile inserts, Click'n'Crimp can be customized according to the user's own requirements: Crimping profile inserts for unshielded 6-pin modular plugs (Western plugs) RJ 11 (6P4C) and RJ 12 (6P4C) and RJ 12 (6P6C), type SS, AMP (M4) 1 pair

Length (mm) 80 mm  
Width (mm) 55 mm  
Height (mm) 14 mm  
Weight (kg) 0,05 kg



Attribute	Value
Application	sonstige
Press mold	sonstige

GTIN: 4021103060162

CIMCO Werkzeuge GmbH & Co. KG  
Hohenagener Straße 1 – 5  
42855 Remscheid  
Telefon +49 2191 3718-01  
info@cimco.de • cimco.de