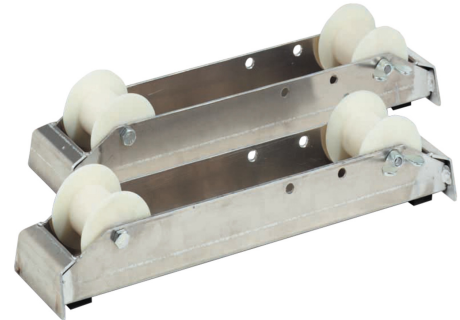


ALUMINUM ROLLER TRACKS WITH PLASTIC ROLLERS

Article number: 142698

Katimex® aluminum roller rail, with a load capacity of up to 300 kg, for cable drums of any width, with roll-up ramp and non-slip rubber feet, variable support roller spacing (250 mm, 330 mm, 410 mm). With plastic rollers, without locking device (roll-off brake), 1 pair.

Length (mm)	650 mm
Width (mm)	250 mm
Height (mm)	125 mm
Weight (kg)	5,2 kg



Attribute	Value
Material	Aluminium
Execution	Rollenschiene
Mounting type	freistehend
Weight	5 kg
With carrying handle	No
Load capacity	300 kg
Demountable	No
Adjustable width	Yes
Max. Cable reel width	- mm
Max. Cable drum diameter	- mm

GTIN: 4021103426982

CIMCO Werkzeuge GmbH & Co. KG
 Hohenhagener Straße 1 – 5
 42855 Remscheid
 Telefon +49 2191 3718-01
 info@cimco.de • cimco.de