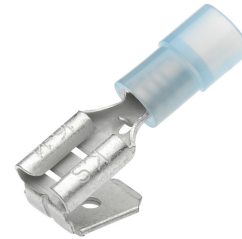


INSULATED BLADE RECEPTACLE WITH BRANCH, CROSS-SECTION/PLUG DIMENSION 1.5 - 2.5 MM²/6.3 X 0.8 MM

Article number: 180282

Insulated flat receptacle with branch. Technical data: Material: CuZn (brass); Surface: electroplated, tin-plated; Insulation PA (polyamide, nylon), halogen-free, Temperature resistant -60°C to +105°C, 600 V max; Easy Entry enables simple and fast insertion of the conductor. Cross section: 1.5-2.5 mm²; Plug dimension: 6.3x0.8 mm; Insulation color: blue; L1: 22; L2: 7.5; D1: 8; Weight per 100 pcs.~kg: 0.15; Packs of 100



Length (mm) 150 mm
 Width (mm) 85 mm
 Height (mm) 7 mm
 Weight (kg) 0,0015 kg

Attribute	Value
Surface protection	verzinkt
Material	Messing
Execution	Hülse
Halogen-free	Yes
Insulation material	Polyvinylchlorid (PVC)
AWG range	13 - 15
Insulation	teilsoliert
Nominal cross-section	1.5 mm ² - 2.5 mm ²
Color of the insulation	blau
Plug dimensions	flach 6,3x0,8 mm
With latching nose	No
With tap	No
Maximum current (I _{max})	- A

GTIN: 4021103802823

CIMCO Werkzeuge GmbH & Co. KG
 Hohenhagener Straße 1 – 5
 42855 Remscheid
 Telefon +49 2191 3718-01
 info@cimco.de • cimco.de