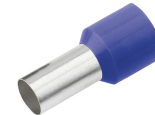


FERRULE INSULATED CROSS-SECTION/SLEEVE LENGTH 0.75 MM²/8 MM
Article number: 181000

Insulated ferrules, dimensions according to DIN 46228, part 4, color series 1. Technical data - Material: Cu-ETP according to DIN EN 13600 - Surface: electro tin plated - Insulation polypropylene - Temperature resistance -35°C to +105 °C - For easy plugging onto fine stranded copper conductors, prevents damage and splicing. Cross section: 0.75 mm²; Length without insulation L2: 8 mm; Total length: L1: 14 mm, D1: 1.2; S1: 0.15, S2: 0.25; D2: 2.8; Insulation color: blue; Weight per 100 pieces~kg: 0.01; Packs per piece: 100



Length (mm)	155 mm
Width (mm)	105 mm
Height (mm)	5 mm
Weight (kg)	0,00011 kg

Attribute	Value
Nominal cross-section	0.75 mm ²
Surface protection	verzinkt
Material	Kupfer
Color	blau
Insulated	Yes
Halogen-free	Yes
Strip goods	No
Total length	14 mm
Design	Standard
For short-circuit-proof cables	No
Insulation material	Polypropylen (PP)
Sleeve length	8 mm
With identification flag	No

GTIN: 4021103810002

CIMCO Werkzeuge GmbH & Co. KG
 Hohenhagener Straße 1 – 5
 42855 Remscheid
 Telefon +49 2191 3718-01
 info@cimco.de • cimco.de