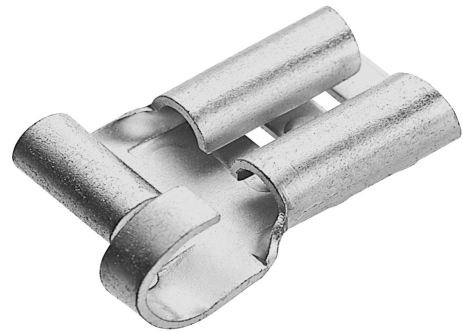


**FLAT RECEPTACLE WITH LATERAL CONDUCTOR CONNECTION, CROSS-SECTION 0.5 - 1 MM<sup>2</sup>, PLUG DIMENSION 6.3 X 0.8 MM**
**Article number: 181220**

Flat receptacles with side conductor connection, non-insulated. Technical data: Material: brass, tin-plated. Cross-section: 0.5-1 mm<sup>2</sup>; Plug dimension: 6.3x0.8 mm, Total length: 15 mm; Weight per 100 pcs: ~kg: 0.08; Packs of: 100.

Length (mm)	60 mm
Width (mm)	95 mm
Height (mm)	10 mm
Weight (kg)	0,0008 kg



Attribute	Value
Surface protection	blank
Material	Messing
Execution	Hülse
Halogen-free	Yes
Insulation	nicht isoliert
Nominal cross-section	0.5 mm <sup>2</sup> - 1 mm <sup>2</sup>
Plug dimensions	flach 6,3x0,8 mm
With latching nose	No
With tap	No
Maximum current (I <sub>max</sub> )	- A

GTIN: 4021103812204

CIMCO Werkzeuge GmbH & Co. KG  
 Hohenhagener Straße 1 – 5  
 42855 Remscheid  
 Telefon +49 2191 3718-01  
 info@cimco.de • cimco.de