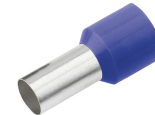


FERRULE INSULATED CROSS-SECTION/SLEEVE LENGTH 2.5 MM²/18 MM
Article number: 182207

Insulated ferrules, dimensions according to DIN 46228, part 4, color series 2. Technical data - Material: Cu-ETP according to DIN EN 13600 - Surface: electro tin plated - Insulation polypropylene - Temperature resistance -35°C to +105°C - For easy plugging onto fine-stranded copper conductors, prevents damage and splicing. Design: cross section 2.5 mm², length without insulation L2: 18 mm; total length L1: 25 mm; D1: 2.2; S1: 0.15, S2: 0.25; D2: 4.2; insulation color: blue, weight per 100 pcs.: 0.03; packing unit: 100.



Length (mm)	145 mm
Width (mm)	75 mm
Height (mm)	9 mm
Weight (kg)	0,0003 kg

Attribute	Value
Nominal cross-section	2.5 mm ²
Surface protection	verzinkt
Material	Kupfer
Color	blau
Insulated	Yes
Halogen-free	Yes
Strip goods	No
Total length	24 mm
Design	Standard
For short-circuit-proof cables	No
Insulation material	Polypropylen (PP)
Sleeve length	18 mm
With identification flag	No
AWG size	14

GTIN: 4021103822074

CIMCO Werkzeuge GmbH & Co. KG
 Hohenhagener Straße 1 – 5
 42855 Remscheid
 Telefon +49 2191 3718-01
 info@cimco.de • cimco.de