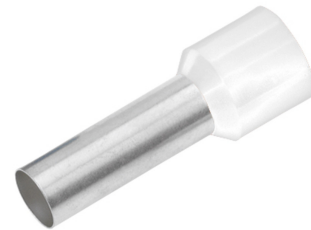


FERRULE INSULATED CROSS-SECTION/SLEEVE LENGTH 0.5 MM²/8 MM
Article number: 182312

Insulated wire end ferrules to DIN 46228, part 4 and special dimensions. Technical data - Material: Cu-ETP in accordance with DIN EN 13600 - Surface: electro-tinned - Polypropylene insulation - Temperature resistance -35°C to +105°C - For easy fitting on fine-stranded copper conductors, prevents damage and splicing. Design: Cross-section: 0.5 mm²; Length without insulation L2: 8 mm; Total length L1: 14 mm; D1: 1; S1: 0.15; S2: 0.25; D2: 2.6; Insulation color: white; Weight per 100 pcs ~ kg: 0.01; PU/pcs: 100.



Length (mm)	145 mm
Width (mm)	105 mm
Height (mm)	4 mm
Weight (kg)	0,00009 kg

Attribute	Value
Nominal cross-section	0.5 mm ²
Surface protection	verzinkt
Material	Kupfer
Color	weiß
Insulated	Yes
Halogen-free	Yes
Strip goods	No
Total length	14 mm
Design	Standard
For short-circuit-proof cables	No
Insulation material	Polypropylen (PP)
Sleeve length	8 mm
With identification flag	No
AWG size	20

GTIN: 4021103823125

CIMCO Werkzeuge GmbH & Co. KG
 Hohenhagener Straße 1 – 5
 42855 Remscheid
 Telefon +49 2191 3718-01
 info@cimco.de • cimco.de