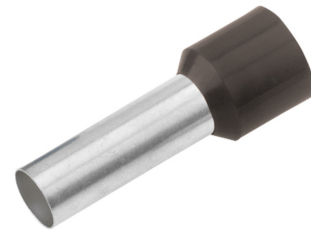


**FERRULE INSULATED CROSS-SECTION/SLEEVE LENGTH 1.5 MM<sup>2</sup>/8 MM**
**Article number: 182332**

Insulated ferrules according to DIN 46228, part 4 and special dimensions. Technical data - Material: Cu-ETP according to DIN EN 13600 - Surface: electroplated tin - Insulation polypropylene - Temperature resistance -35°C to +105°C - For easy plugging onto fine-stranded copper conductors, prevents damage and splicing. Design: cross section: 1.5 mm<sup>2</sup>; length without insulation L2: 8 mm; total length L1: 14 mm; D1: 1.7; S1: 0.15; S2: 0.25; D2: 3.5; insulation color: black; weight per 100 pcs.: 0.01; packing unit: 100.



Length (mm)	145 mm
Width (mm)	105 mm
Height (mm)	5 mm
Weight (kg)	0,00013 kg

Attribute	Value
Nominal cross-section	1.5 mm <sup>2</sup>
Surface protection	verzinkt
Material	Kupfer
Color	schwarz
Insulated	Yes
Halogen-free	Yes
Strip goods	No
Total length	14 mm
Design	Standard
For short-circuit-proof cables	No
Insulation material	Polypropylen (PP)
Sleeve length	8 mm
With identification flag	No
AWG size	sonstige

GTIN: 4021103823323

CIMCO Werkzeuge GmbH & Co. KG  
 Hohenhagener Straße 1 – 5  
 42855 Remscheid  
 Telefon +49 2191 3718-01  
 info@cimco.de • cimco.de