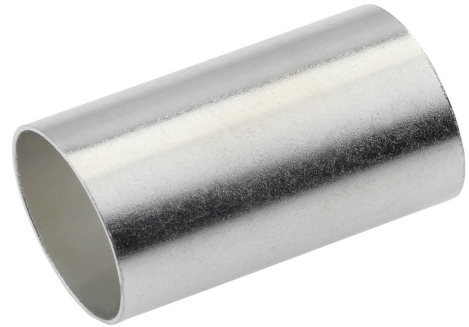


## SLEEVE FOR COMPACTED CONDUCTORS, CONDUCTOR CROSS-SECTION 25 MM<sup>2</sup>, LENGTH 14 MM, 100 PIECES

**Article number: 183401**

Sleeve for compacted or thinned conductors CU, standard version. Technical data - Material: Cu-ETP according to DIN EN 13600 - Surface: electro tin plated. Suitable for compacted, stranded or thinned, fine-stranded conductors for diameter compensation (only narrow hexagonal crimping!) Design: Cross-section: 25 mm<sup>2</sup>; Length: 14 mm; Packs of 100.



Length (mm) 0 mm  
 Width (mm) 0 mm  
 Height (mm) 0 mm  
 Weight (kg) 0,00038 kg

Attribute	Value
Nominal cross-section	25 mm <sup>2</sup>
Surface protection	galvanisch verzinkt
Length suitable for	Kabelschuhe und -verbinder Normal-Ausführung
Ladder shape	rund

GTIN: 4021103834015

CIMCO Werkzeuge GmbH & Co. KG  
 Hohenhagener Straße 1 – 5  
 42855 Remscheid  
 Telefon +49 2191 3718-01  
 info@cimco.de • cimco.de