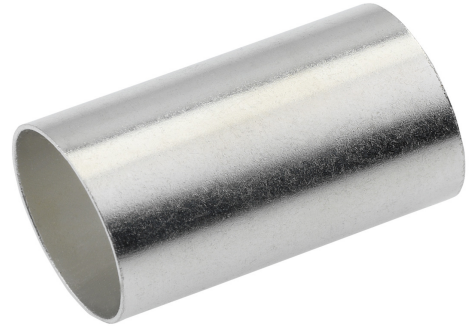


**SLEEVE FOR COMPACTED CONDUCTORS, CONDUCTOR CROSS-SECTION 95 MM<sup>2</sup>, LENGTH 21 MM, 1 PIECE**
**Article number: 183405**

Sleeve for compacted or thinned conductors CU, standard version. Technical data - Material: Cu-ETP according to DIN EN 13600 - Surface: electro tin plated. Suitable for compacted, stranded or thinned, fine-stranded conductors for diameter compensation (only narrow hexagonal crimping!) Design: Cross-section: 95 mm<sup>2</sup>; Length: 21 mm; Packs of: 1.



Length (mm)	21 mm
Width (mm)	12 mm
Height (mm)	12 mm
Weight (kg)	0,00223 kg

Attribute	Value
Nominal cross-section	95 mm <sup>2</sup>
Surface protection	galvanisch verzinkt
Length suitable for	Kabelschuhe und -verbinder Normal-Ausführung
Ladder shape	rund

GTIN: 4021103834053

CIMCO Werkzeuge GmbH & Co. KG  
 Hohenhagener Straße 1 – 5  
 42855 Remscheid  
 Telefon +49 2191 3718-01  
 info@cimco.de • cimco.de