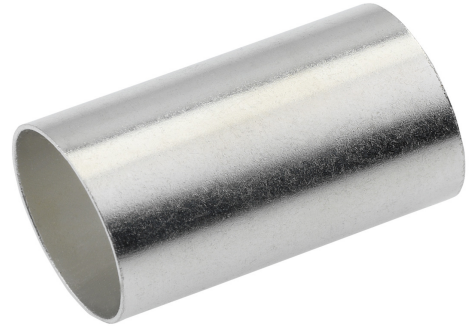


SLEEVE FOR COMPACTED CONDUCTORS, CONDUCTOR CROSS-SECTION 400 MM², LENGTH 38 MM, 1 PIECE
Article number: 183411

Sleeve for compacted or thinned conductors CU, standard version. Technical data - Material: Cu-ETP according to DIN EN 13600 - Surface: electro tin plated. Suitable for compacted, stranded or thinned, fine-stranded conductors for diameter compensation (only narrow hexagonal crimping!) Design: Cross-section: 400 mm²; Length: 38 mm; Packs of: 1.



Length (mm) 0 mm
 Width (mm) 0 mm
 Height (mm) 0 mm
 Weight (kg) 0,01108 kg

Attribute	Value
Nominal cross-section	100 mm ²
Surface protection	galvanisch verzinkt
Length suitable for	Kabelschuhe und -verbinder Normal-Ausführung
Ladder shape	rund

GTIN: 4021103834114

CIMCO Werkzeuge GmbH & Co. KG
 Hohenhagener Straße 1 – 5
 42855 Remscheid
 Telefon +49 2191 3718-01
 info@cimco.de • cimco.de