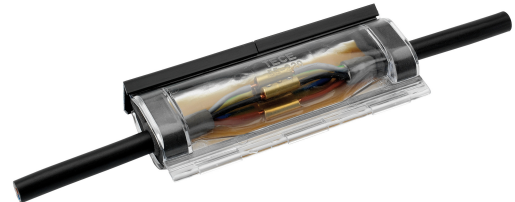


CAST RESIN SOCKET AVM 95 - 400 D

Article number: 184666

Insulated ferrules, tape goods. Technical data; Material:
Cu-ETP according to DIN EN 13600 - Surface: electro-tinned
- Insulation polypropylene - Temperature resistance -35°C to
 $+105^{\circ}\text{C}$. Design: color series 1; cross section: 1.5 mm^2 , length:
14 mm; insulation color: black; PU/pc.: 500.



Length (mm)	405 mm
Width (mm)	305 mm
Height (mm)	160 mm
Weight (kg)	3,74 kg

Attribute	Value
Suitable for	sonstige
Execution	Gießharz
Halogen-free	No
Type	sonstige
Mining license	No
Nominal conductor cross-section main cable	$35\text{ mm}^2 - 70\text{ mm}^2$
Nominal conductor cross-section branch cable	$16\text{ mm}^2 - 25\text{ mm}^2$
Number of conductors	4
Connection accessories supplied	ohne

GTIN: 4021103846667

CIMCO Werkzeuge GmbH & Co. KG
Hohenagener Straße 1 – 5
42855 Remscheid
Telefon +49 2191 3718-01
info@cimco.de • cimco.de