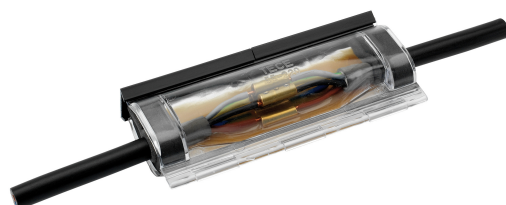


## 1 KV TWO-COMPONENT CASTING RESIN, PUR 160 - 400 D

### Article number: 184682

1KV two-component casting resin set, as a can container.  
The casting resin complies with the standard according to VDE 0291 Part 2. The polyurethane casting resin is an unfilled, low-viscosity, elastically curing two-component system. Technical data: storable for 24 months; storage in dry rooms between +5°C and +50°C; curing within 24 hours, temperature resistance between -25°C and +120°C in cured state; resin and hardener can be disposed of in household waste. Model: incl. stirring wood, glove and instructions; type: PUR 160-400D; filling quantity/resin: 0.400 kg; filling quantity/hardener: 345cm<sup>3</sup>. PU: 1



Length (mm)	225 mm
Width (mm)	180 mm
Height (mm)	111 mm
Weight (kg)	0,465 kg

Attribute	Value
Suitable for	sonstige
Execution	Gießharz
Halogen-free	No
Type	sonstige
Mining license	No
Connection accessories supplied	ohne

GTIN: 4021103846827

CIMCO Werkzeuge GmbH & Co. KG  
Hohenagener Straße 1 – 5  
42855 Remscheid  
Telefon +49 2191 3718-01  
info@cimco.de • cimco.de