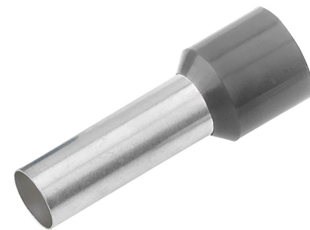


FERRULE INSULATED 4.0 MM²/18 MM, FR DIN, GRAY

Article number: 187021

Insulated wire end ferrules to DIN 46228-4, color series DIN, made of CU-ETP to DIN EN 13600, tin-plated, with polypropylene insulation, suitable for fine-stranded copper conductors of classes 5 and 6 to DIN EN 60228. The ferrules are temperature-resistant up to 105 °C. Technical data: Nominal cross-section (mm²): 4 | Insulation color: grey | d1: 2.8 | d2: 4.8 | l1: 24 | l2: 18 | S1: 0.15 | S2: 0.25 | Weight per 100 pieces: approx. 0.038 kg | PU/pc: 100.



Length (mm)	26 mm
Width (mm)	5,2 mm
Height (mm)	26 mm
Weight (kg)	0,00038 kg

Attribute	Value
Nominal cross-section	4 mm ²
Surface protection	verzinkt
Material	Kupfer
Color	grau
Insulated	Yes
Halogen-free	Yes
Strip goods	No
Total length	24 mm
Design	Standard
For short-circuit-proof cables	No
Insulation material	Polypropylen (PP)
Sleeve length	18 mm
With identification flag	No

GTIN: 4021103112175

CIMCO Werkzeuge GmbH & Co. KG
 Hohenhagener Straße 1 – 5
 42855 Remscheid
 Telefon +49 2191 3718-01
 info@cimco.de • cimco.de