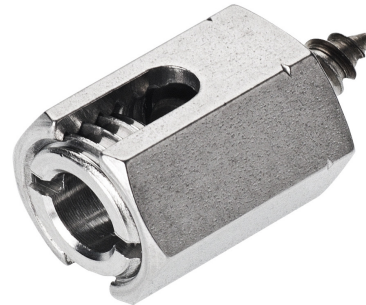


SOLFIL EARTHING CLAMP, MOUNTING ON EXISTING HOLE, WITH SELF-TAPPING SCREW PER HOLE Ø 4 MM
Article number: 188014

Grounding clamp SOLFIL. The safe and durable solution from CIMCO for grounding PV panels. The choice of simple and durable safety. The protection of photovoltaic panels by means of grounding is necessary. It should be durable and provide protection against the effects of lightning strikes and electromagnetic interference throughout their lifetime. The connection series offers you solutions adapted to the different types of photovoltaic panels. A safe grounding is obtained by establishing an optimal electrical contact between the panel housing and the grounding conductor. The module frames are made of anodized or otherwise treated aluminum. These coatings protect against rust, but do not conduct. Thanks to the series, electrical contact with the aluminum of the panel is possible. Either through a threaded passage in the screwed models or secured by the threaded recess by bolt connection with the help of a serrated lock washer, which scrapes the anodizing during tightening. The connection is secured by tightening the grounding conductor with a maximum cross-section of 10 mm². In the case of an insulated conductor, it is necessary to remove the insulation to 30 mm. The models are made of stainless steel, which ensures excellent rust protection and galvanic compatibility with aluminum. Fastening to existing hole, with self-tapping screw per hole with a Ø of 4 mm (0.16"). Cross-section range of the grounding conductor in mm² [stranded or solid]: 4, 6, 10, 4+4, 6+6. PU: pcs: 1.



Length (mm)	25 mm
Width (mm)	16 mm
Height (mm)	16 mm
Weight (kg)	0,018 kg

Attribute	Value
Surface protection	sonstige
Material	Aluminium
Execution	Erdungsverbinder
Width	16 mm
Height	16 mm

CIMCO Werkzeuge GmbH & Co. KG
 Hohenhagener Straße 1 – 5
 42855 Remscheid
 Telefon +49 2191 3718-01
 info@cimco.de • cimco.de

With mounting material
Depth

Yes
25 mm

GTIN: 4021103880142

CIMCO Werkzeuge GmbH & Co. KG
Hohenhagener Straße 1 – 5
42855 Remscheid
Telefon +49 2191 3718-01
info@cimco.de • cimco.de